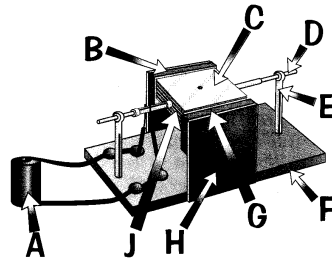


# The Electric Motor

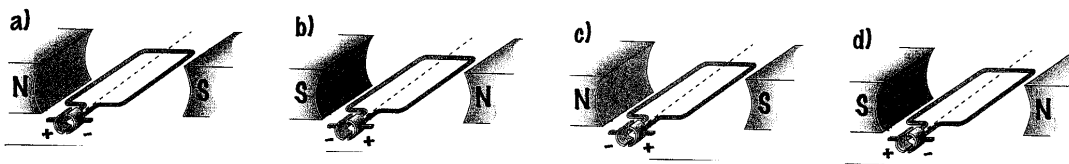
1. The diagram below shows an electric motor that can be made in the lab.



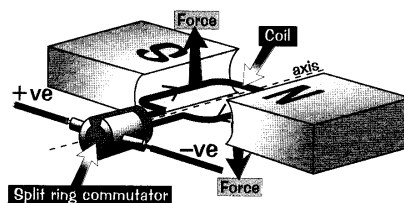
Identify the parts A-J from the following list

coils of wire    split pin    magnet    base    cell    "core"    axle    yoke

2. There are several ways to increase the speed of the motor. Copy out and complete the following sentences
- (i) Put more ..... on the coil
- (ii) Put in ..... magnets.
3. For the motors below, use Fleming's left hand rule to work out if they will rotate clockwise or anticlockwise



4. The diagram below shows a simple electric motor.



Copy out the following sentence, and fill in the missing words

When a current flows through the ..... the left side is pushed ..... and the right side ..... When the coil is vertical, no forces act as there is no..... The coil shoots past the vertical and the split ring commutator changes the direction of the ..... Now the ..... point the other way, and the coil continues to rotate.