

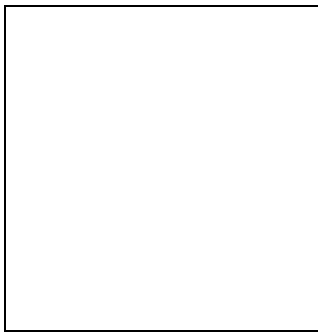
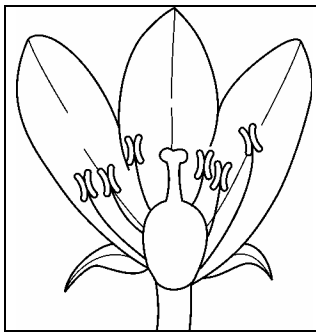
7Ae/1 Flower dissection 1

Name _____ Class _____

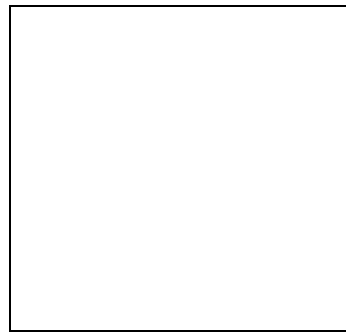
Flowers contain the male and female reproductive organs of plants.

- 1 Look carefully at your flower. What plant is it from? _____
- 2 How many petals are there on your flower? _____
- 3 What colour are the petals? _____

Using tweezers, carefully take off the petals from one side of the flower so that you can see the male and female reproductive organs. Your flower may look similar to the one below.

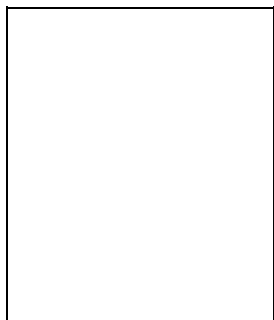
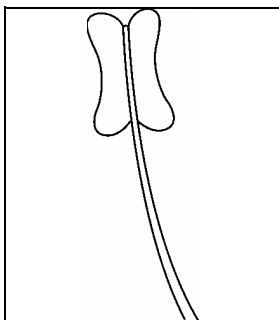


A petal from the flower – stick in or draw the shape of one petal in this box.

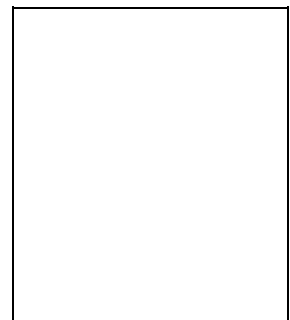
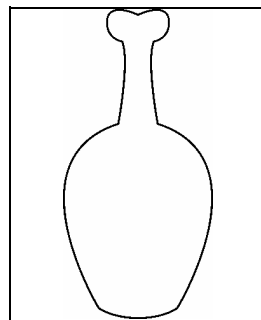


The flower looks like this – draw a picture showing the flower with half the petals taken off.

Now take off one stamen and remove the carpel. Stick them or draw them in the boxes. Label their parts if you can.



The stamen looks like this.



The carpel looks like this.

- 4 How many stamens are there in the flower? _____

[knowledge, observing, presenting]