

Fluorescence

A.C. NORMAN

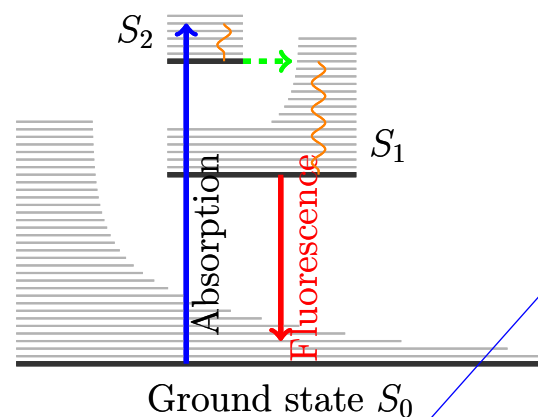
anorman@bishopheber.cheshire.sch.uk

Fluorescence

It is possible that an atom which has been excited by absorbing a photon will not return to its initial state by emitting a photon of the same energy, but will instead go to an interim state and emit a photon of lower energy than the photon which was originally absorbed.

This ability to seemingly change the wavelength of light (absorbing at one wavelength and emitting light of another wavelength) was known about and studied long before quantum theory was developed. If the light is emitted rapidly following absorption, the process is called *fluorescence*¹, whereas if there is an appreciable delay (in some cases seconds, minutes or even many hours) it is called *phosphorescence*.

The most striking examples of fluorescence occur when the absorbed radiation is in the ultraviolet region of the spectrum, and thus invisible to the human eye, and the emitted light is in the visible region. Any number of commonplace materials (e.g. detergents, organic dyes, tonic water, and tooth enamel) will emit characteristic visible photons so that they appear to glow under ultraviolet illumination.



¹George Gabriel Stokes coined this term in his 1852 paper on the "Refrangibility" (wavelength change) of light, after studying extensively the ability of fluorspar and uranium glass to change invisible light beyond the violet end of the visible spectrum into blue light. He wrote "I am almost inclined to coin a word, and call the appearance fluorescence, from fluor-spar [i.e. fluorite]".

I don't understand this...

Why does this happen?

I imagine it's all part of the overall probability of something occurring when the photon is absorbed

What does interim mean?

How is this light emitted?

I'm unsure about how there *can* be a delay? How is the energy stored?

If there was a delay between jumping down each shell and it was 'charge' (excited) would it be possible to see the object producing glow colours that changed over time?

Can things fluoresce in multiple wavelengths simultaneously? e.g. One electron jumping from $N=0$ to $N=3$ (absorbing energy) will then emit multiple wavelengths $N=3$ to $N=2$ to $N=1$ to $N=0$

As the energy of the photons excited would be the same as the initial photon wouldn't it be the same colour?

There is widespread commercial use of fluorescent substances, for example in washing powders and paper to ‘whiten’ (making white bluer makes it appear a crisper, whiter white). Highlighter ink is often fluorescent due to the presence of pyranine. Banknotes, postage stamps and credit cards also often have fluorescent security features.

Fluorescent tube

The common fluorescent lamp relies on fluorescence to convert the invisible ultraviolet radiation emitted by a mercury discharge tube into visible light. The inside of the glass of the discharge tube is coated with fluorescent phosphors which absorb ultraviolet and re-emits visible light.

The low pressure mercury within the tube of a fluorescent lamp has an emission spectrum (the emission is caused by electrons hitting the gaseous mercury atoms when electricity is passed through the tube) which is dominated by a line in the ultraviolet at 254 nm, which is converted into visible emissions at many different wavelengths in the visible spectrum by the phosphors. Mercury also emits visible light at wavelengths of 436 nm (blue), 546 nm (green), and 579 nm (yellow-orange). These three lines can be observed superimposed on the white continuous spectrum by using a spectroscope, or even when looking at the spectrum diffracted from a CD.

Fluorescent lighting is more energy-efficient than old-fashioned incandescent bulbs (in which most of the input power gets turned into heat, not light). A fluorescent tube can produce an equal amount of light using one quarter of the power of a filament bulb. However, the uneven spectrum of traditional fluorescent lamps may cause certain colors to appear different than when illuminated by incandescent light or daylight.

COMMENTS ON PAGE 2

What does this look like?

Can it only be mercury used in fluorescent tubes? Would other gases work okay?

What is a phosphor?

What are phosphors?

What are these?

Why does the mercury need to be low pressure?

What is this, is it the same as a line spectrum?

Where is efficiency lost in Fluorescent Lighting?

What do incandescent bulbs contain?

What does this spectrum look like?