

# Single slit diffraction

A.C. NORMAN

anorman@bishopheber.cheshire.sch.uk

## Diffraction

Diffraction is the spreading out of waves as they pass through apertures or around obstacles (i.e. any situation when they don't travel in straight lines). The extent of the diffraction depends on the scale of the apparatus; diffraction effects only become noticeable then when this scale is similar to or less than the wavelength involved.

This explains why we cannot see around corners: the wavelength of visible light is of the order of  $10^{-7}$  m, which is so small that no diffraction is seen with obstacles of normal size. A typical Young's double slits apparatus is about a metre long (about 10 million times the wavelength of light) and the slits themselves are about a thousand wavelengths across. Diffraction effects are observable on this scale, but only with care.

In contrast, on a human scale we are very familiar with the diffraction effects of sound, being able to hear it round wide openings like doorways as the wavelength is comparable with the width of the opening (middle C has a frequency of about 262 Hz, meaning its wavelength will be 1.3 m). Generally, diffraction increases with longer wavelength—things 'seem smaller' to the wave—and for this reason, high pitched sounds can be more easily heard from around corners and through doorways than lower pitches.<sup>1</sup>

## Historical importance

In 1665, Grimaldi observed that the shadow of a thin wire in a light beam was much broader than he expected, and invented the word 'diffractio' to describe the bending of the light (from the Italian meaning 'break' or 'snap'). Although Newton repeated this experiment, its true significance—that in certain circumstances, light can bend round corners—had to wait more than a century to be recognized, when Huygens' wave theory of light had once again gained acceptance. Another example was provided by Poisson, who worked out

<sup>1</sup>When vibrations from sound waves are transmitted through walls, the converse is true: lower frequencies are transmitted better.

What is it about apertures and gaps causes diffraction to occur?

What is an aperture?

What is an aperture?

So the larger the wavelength, the more obvious the diffraction?

Do other forms of electromagnetic wave - radio, x-ray &c. - diffract, and can we utilize this?

Why do waves spread out around walls or through slits?

Why do the diffraction effects only become noticeable when the scale is similar to or less than the wavelength involved?

How can diffraction be used?

How does the slit affect it?

Why do we hear high pitches round corners better and low pitches through walls better?

Why are lower frequencies better to pass through walls?

Do we need to know about the historical context?

Do we need to know any historical context of diffraction? (or is it just to help explain it?)

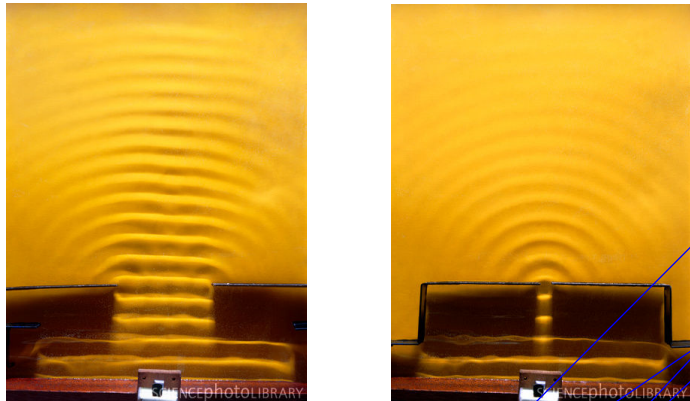
Do we need to remember the historical importance or just understand it? (is it on the syllabus)?

What is Huygens' light theory?

mathematically that the superposition of the waves from the edge of a small circular disk ought to produce a bright spot in the center of its shadow. He thought this impossible, but when experiment confirmed his prediction, he became a supporter of the wave theory of light.

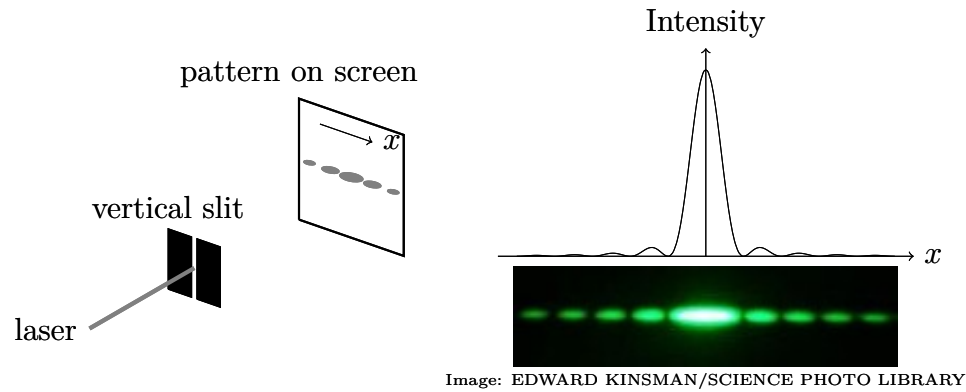
Diffraction at a single slit

Suppose parallel wavefronts are diffracted at a narrow opening or slit. This is called *Fraunhofer diffraction*.<sup>2</sup> This effect is easily demonstrated for water waves using a ripple tank, which will show the spreading of the wavefronts beyond the opening, and also the dependence on the wavelength and size of opening.



Images: ANDREW LAMBERT PHOTOGRAPHY/SCIENCE PHOTO LIBRARY

Light can also be shown to diffract at a single slit. The single slit is illuminated with a coherent beam of light (from a laser) and the section of beam which passes through the slit diffracts to form the characteristic intensity pattern shown. The maximum brightness of the pattern occurs immediately ahead of the slit and decreases to each side. Not only is there a central intense spread, but subsidiary maxima and minima can also be seen on both sides (these are not easily observed for water waves).



<sup>2</sup>The diffraction of circular wavefronts from a near object is called *Fresnel diffraction*, which we shall not study.

If you have only a small dot instead of a slit will the diffraction pattern be a large circle on the wall behind?

What is the biggest spread we can get?

What's a coherent beam of light?

Is coherent light when all of the light is of the same wavelength?

What is mean by coherent light?

What's coherent light?

What does it mean by "subsidiary maxima"?

How do you get superposition causing the waves to cancel and form dark fringes, if there is only a single slit?

The central broad maximum is twice as wide as all the other bright bands, and the minima going outwards from this are evenly spaced in terms of angular displacement.<sup>3</sup> However, the intensities of the illuminated bands between the minima fall away very markedly, all being much less intense than the larger central band, and so a dark room and good equipment is needed to see more than two or three bands on each side of the maximum.

With a narrower slit (or equivalently a longer wavelength of light) the light spreads out more as diffraction is more pronounced, and this is why the light is seen to spread out in the direction of the smallest dimension of the slit, i.e. a horizontal pattern of bands is seen for a vertical slit. A narrower slit also allows less wave energy to pass through it, and hence the brightness at any point on the screen is reduced.

## COMMENTS ON PAGE 3

Why does the central broad maximum have to be twice as wide as the other bands?

Why is the central bright maximum twice as wide as the other bright bands?

Why is the central maximum twice as wide?

Is the decrease in brightness from the centre ahead of the slit identically symmetrical?

Why does a smaller slit have more diffraction?

How does wavelength affect diffraction angle?

Why do things "seem smaller" as the wavelength increases?

Would a horizontal slit cause a vertical pattern to be produced?

Can a horizontal slit reflect similar results as a vertical slit, in that it gives a vertical pattern of bands?

What are the real life practical applications of single slit diffraction?

 Except where otherwise noted, this work is licensed under <http://creativecommons.org/licenses/by-nc-sa/3.0/>

<sup>3</sup>The angular positions  $\theta_n$  of successive minima are given by  $d \sin \theta = n\lambda$ , where  $d$  is the slit width,  $\lambda$  is the wavelength of the light, and  $n$  is the order of the minimum.